

BLAUX

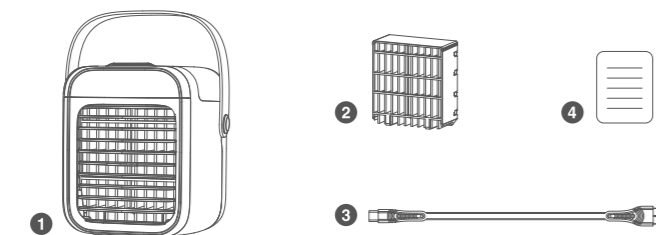


PORTABLE AC
INSTRUCTION MANUAL

Specifications

| | |
|---------------------|----------------------------|
| Material | ABS + Silica Gel + Leather |
| Input | 5V --- |
| Water Tank Capacity | 300ml |
| Motor Speed | 1500rpm - 2500rpm |
| Working Current | 0.2A - 1.6A |
| Product Size | 173 x 152 x 173mm |
| Weight | 873g |
| Working Wattage | 1W - 8W |
| Battery Capacity | 2000mAh/18650 |

Package Content

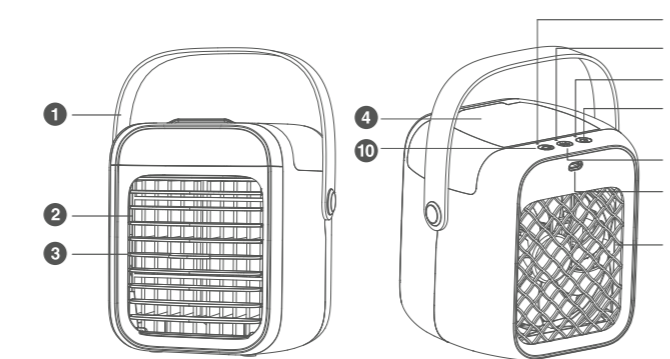


- 1 Portable AC
- 2 Water Curtain
- 3 Type-C Charging Cable
- 4 Instruction Manual

01

FRONT SIDE

Product Structure



- 1 Belt
- 2 Air Outlet
- 3 Adjustable Fan Blade
- 4 Tank Lid
- 5 Charging Indicator
- 6 Spray Indicator
- 7 Fan Indicator
- 8 Fan Button
- 9 Spray Opening Key
- 10 LED Light Switch
- 11 Type-C Port
- 12 Air Inlet

02

Indicator Status Description

| Indicator Status | Charging Indicator | Fan Indicator | Spray Indicator |
|---------------------------|---------------------------------|---------------|-----------------|
| The red light is on | Charging | Slow Speed | --- |
| The green light is on | --- | Medium Speed | --- |
| The blue light is on | Full charge | Fast Speed | --- |
| The white light is on | --- | --- | Humidifier on |
| The red light is blinking | The battery is low | --- | --- |
| Light Off | Not charging/ Out of battery | Not On | Humidifier off |

How To Start The Fan/Humidifier/Light Function

- The fan is powered using a Type-C charging cable to connect the fan with the charging adapter or your computer's USB port.
- Press the Fan button to start. Press the Fan and Spray Indicator buttons at the same time to activate the humidifier. Push the Fan Indicator button to speed up the power of the fan. Use the Fan button again to shut off the device.
- When the fan is on, press the Spray Indicator button to turn off the humidifier separately. When the device detects that there is not enough water in the water tank, the humidifier function will automatically shut off.
- Press the LED Light Switch button to cycle through the different colors. Hold the button to keep the light a steady color. Push the button again to shut it off.

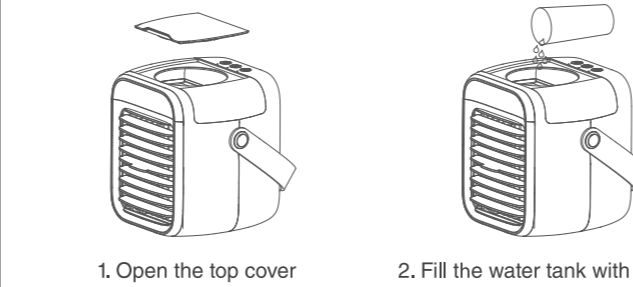
Tip: Soak the Water Absorption Curtain before using for a better cooling effect!

03

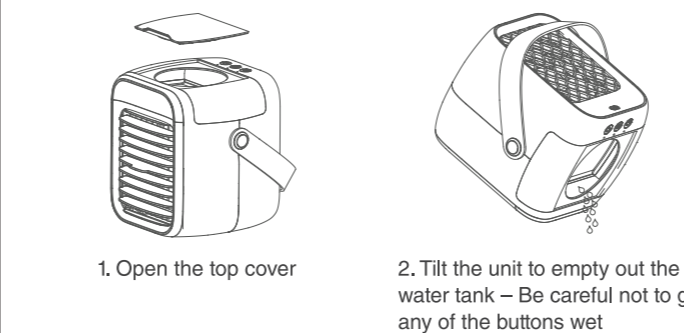
BACK SIDE

How To Fill The Water Tank/Drain Water

Filling Your Blaux Portable AC:



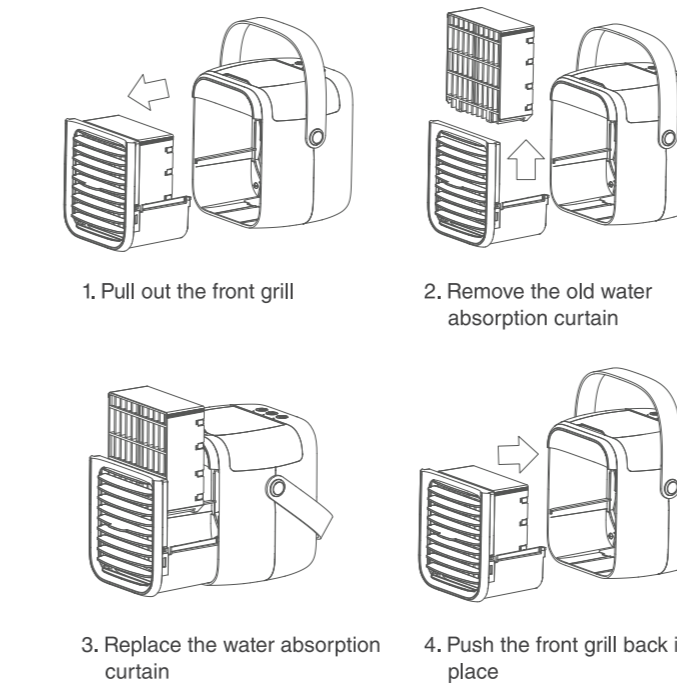
Cleaning:



Attention: After the product is filled with water, it must remain upright to prevent any water from penetrating the circuit board or fan.

04

How To Replace The Water Curtain



Tips: If not using the fan for a long time, drain the water from the tank and blow-dry the curtain. Water absorption curtains generally last 6-8 months. Replace accordingly based on personal use.

05

Safety Precautions

- Check device voltage compatibility with this product before using it;
- Do not disassemble product or handle it roughly;
- Avoid exposure to heat or direct sunlight;
- Keep product out of reach of children and pets;
- Please use included Type-C Cable and 5V/2A adapter;
- Regularly clean the inside and outside of the fan to prevent dust from accumulating. Before cleaning the fan, be sure to turn off the product and unplug the power cord;
- Do not put your fingers or hard objects into the intake/outlet;
- Stop using the product if it starts to malfunction.

06

CE The device complies with the European Directives 2014/30/EU.

♻️ At the end of its service life, this product may not be disposed of in the normal household waste, but rather must be disposed of at a collection point for recycling electrical and electronic devices. The materials are recyclable according to their labeling. You make an important contribution to protecting our environment by reusing, recycling, or utilizing old devices in other ways. Please ask the municipal administration where the appropriate disposal facility is located. Subject to change.

FC This device complies with part 15 of the FCC Rules.

07

封面

IM Dimensions: 148 x 105mm
Double Side Printing
Black&White